

# DM 4

Apparecchio da parete per illuminazione di interni e di esterni ad emissione di luce con varie aperture di fasci luminosi costituito da:

- Struttura in alluminio pressofuso verniciato
- Vetri piani temperati e/o lenti
- Parabola riflettente in alluminio
- Guarnizioni in silicone
- Viti di chiusura in acciaio inox
- Verniciatura in polveri poliestere ad elevata resistenza ai raggi ultravioletti e alla corrosione

Wall outdoor and indoor luminaire with various light beams constructed of:

- Painted die-cast aluminium structure
- Tempered glasses or/and lenses
- Aluminium reflector
- Silicon gaskets
- Stainless steel screws
- Painting using high resistance to UV and corrosion polyester powders



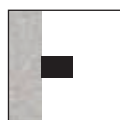
Colori - Colours

- X=2  Bianco White  
X=9  Antracite Anthracite  
X=4  Silver

Diffusore - Diffuser

Codice-Code 00 3031  
00 3034

Codice-Code 04 3033  
lente rettangolare / rectangular lens

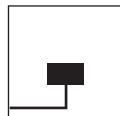


Installazione a parete  
Wall mounting

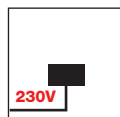


Per / For cod. 3034  
ACCESSORIO: cod. PT74  
Questo accessorio serve per chiudere una o più uscite di luce secondo le esigenze di installazione

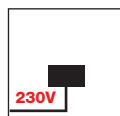
This part is used to close one or more light openings as for the installation's necessities



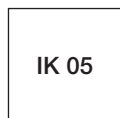
Entrata singola cavi di alimentazione  
Single power supply cables input



LED - Cod. 3031 - 3032 - 3033  
Led a tensione di rete 220/240V 50/60Hz.  
Connessione diretta alla rete di alimentazione senza necessità di alimentatore.  
LED's direct operation at 220/240V 50/60Hz.  
No power supply is required.



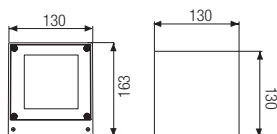
LED - Cod. 3034  
L'apparecchio è fornito completo di alimentatore elettronico 220/240V 50/60Hz posizionato all'interno dell'apparecchio.  
The luminaire is supplied with a 220/240V 50/60Hz built-in power supply.



IK 05



Installazione a parete  
Wall mounting



**DM 4 su richiesta è disponibile anche con fascio luminoso 40°.**

DM 4 available also with 40° light beam on request.



**3031**

**Monodirezionale con un vetro - Fascio luminoso  $\pm 70^\circ$**

Mono direction light with one glass -  $\pm 70^\circ$  light beam

<b>3031.66X</b>	LED	8W	1400 lm	4000 K
<b>3031.67X</b>	LED	8W	1400 lm	3000 K



**3032**

**Bidirezionale con due vetri - Fasci luminosi  $\pm 70^\circ$**

Double direction light with two glasses -  $\pm 70^\circ$  light beams

<b>3032.66X</b>	LED	2x8W	2x1400 lm	4000 K
<b>3032.67X</b>	LED	2x8W	2x1400 lm	3000 K



**3033**

**Bidirezionale con una lente  $\pm 10^\circ$  e un vetro fascio luminoso  $\pm 70^\circ$**

Double direction light with 1 lens  $\pm 10^\circ$  and 1 glass  $\pm 70^\circ$  light beam

<b>3033.66X</b>	LED	2x8W	2x1400 lm	4000 K
<b>3033.67X</b>	LED	2x8W	2x1400 lm	3000 K



**3034**

**4 fasci luminosi**

4 light beams

<b>3034.00X</b>	LED	10W	E27	
<b>3034.55X</b>	LED	17,6W	2270 lm	4000 K
<b>3034.56X</b>	LED	17,6W	2125 lm	3000 K

# DM 4 STELO

Apparecchio da giardino per esterni costituita da:

- Palo in alluminio estruso verniciato
- Corpo superiore in alluminio pressofuso verniciato
- Vetri piani temperati
- Parabola riflettente in alluminio
- Guarnizioni in silicone
- Viti di chiusura in acciaio inox
- Verniciatura in polveri poliesteri ad elevata resistenza ai raggi ultravioletti e alla corrosione

Garden post luminaire constructed of:

- Painted extruded aluminium post
- Painted die-cast aluminium head
- Tempered glasses
- Aluminium reflector
- Silicon gaskets
- Stainless steel screws
- Painting using high resistance to UV and corrosion polyester powders



Record Spa



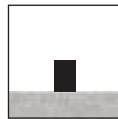
Colori - Colours

X=9  Antracite  
Anthracite

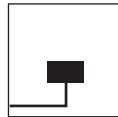
X=4  Silver

Diffusore - Diffuser

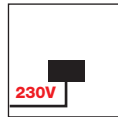
Codice-Code 00 3034  
vetro / glass



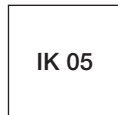
Installazione a terra  
Floor mounting



Entrata singola cavi di alimentazione  
Single power supply cables input



LED  
Led a tensione di rete 220/240V 50/60Hz.  
Connessione diretta alla rete di alimentazione  
senza necessità di alimentatore.  
LED's direct operation at 220/240V 50/60Hz.  
No power supply is required.



IK 05

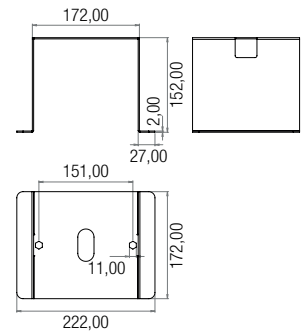
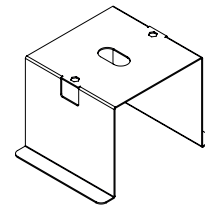


ACCESSORIO / ACCESSORY : art. PT74  
Questo accessorio serve per chiudere una o più uscite di luce secondo le esigenze di installazione

This part is used to close one or more light openings as for the installation's necessities

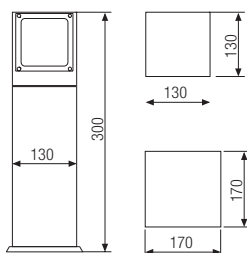
## OPTIONAL Cod. TR 3038

Flangia: accessorio per palo.  
Flange: accessory for post.

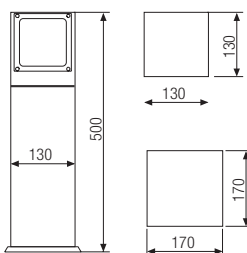


**3035** H 300

<b>3035.00X</b>	LED	10W	E27	
<b>3035.55X</b>	LED	17,6W	2270 lm	4000 K
<b>3035.56X</b>	LED	17,6W	2125 lm	3000 K

**3036** H 500

<b>3036.00X</b>	LED	10W	E27	
<b>3036.55X</b>	LED	17,6W	2270 lm	4000 K
<b>3036.56X</b>	LED	17,6W	2125 lm	3000 K

**3038** H 800

<b>3038.00X</b>	LED	10W	E27	
<b>3038.55X</b>	LED	17,6W	2270 lm	4000 K
<b>3038.56X</b>	LED	17,6W	2125 lm	3000 K

